



CHESTNUT CLOSE
MAIDENHEAD



12 Chestnut Close, Maidenhead Berkshire SL6 8SY

A much improved and beautifully presented 4 bedroom linked detached family home in a quiet cul-de-sac close to the river and circa 1 mile from the town and station. The property offers stylish, versatile and contemporary living space with 4 bedrooms, family bathroom and further ground floor shower room complimented by an attractive enclosed garden and driveway parking.

The property is situated in a convenient location within easy reach of central Maidenhead with its range of shopping and leisure facilities, including cinema complex. Local schools are highly regarded and transport links are excellent. There is a mainline station into London Paddington, serviced by the Elizabeth line, and both the M4 and M40 motorways are close by.

EPC Rating: C
Council Tax Band: F

£715,000 FREEHOLD



Pike Smith & Kemp
22 Queen Street, Maidenhead
Berkshire SL7 1HZ

maidenhead@pikesmithkemp.co.uk
01628 621177

 **rightmove**.co.uk
The UK's number one property website

Zoopla.co.uk

Accommodation summary

Ground floor

- ENTRANCE HALL-
- LIVING ROOM-
- KITCHEN-
- STUDY-
- DINING ROOM/BEDROOM 5-
- SHOWER ROOM-
- CLOAKROOM-
- BOILER ROOM & STORE

First floor

- FOUR BEDROOMS-
- FAMILY BATHROOM-

Outside

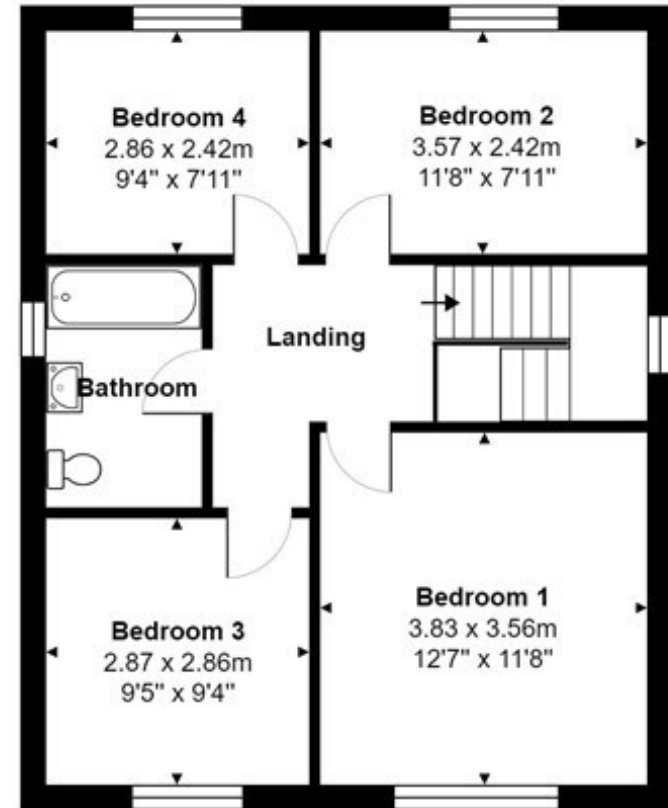
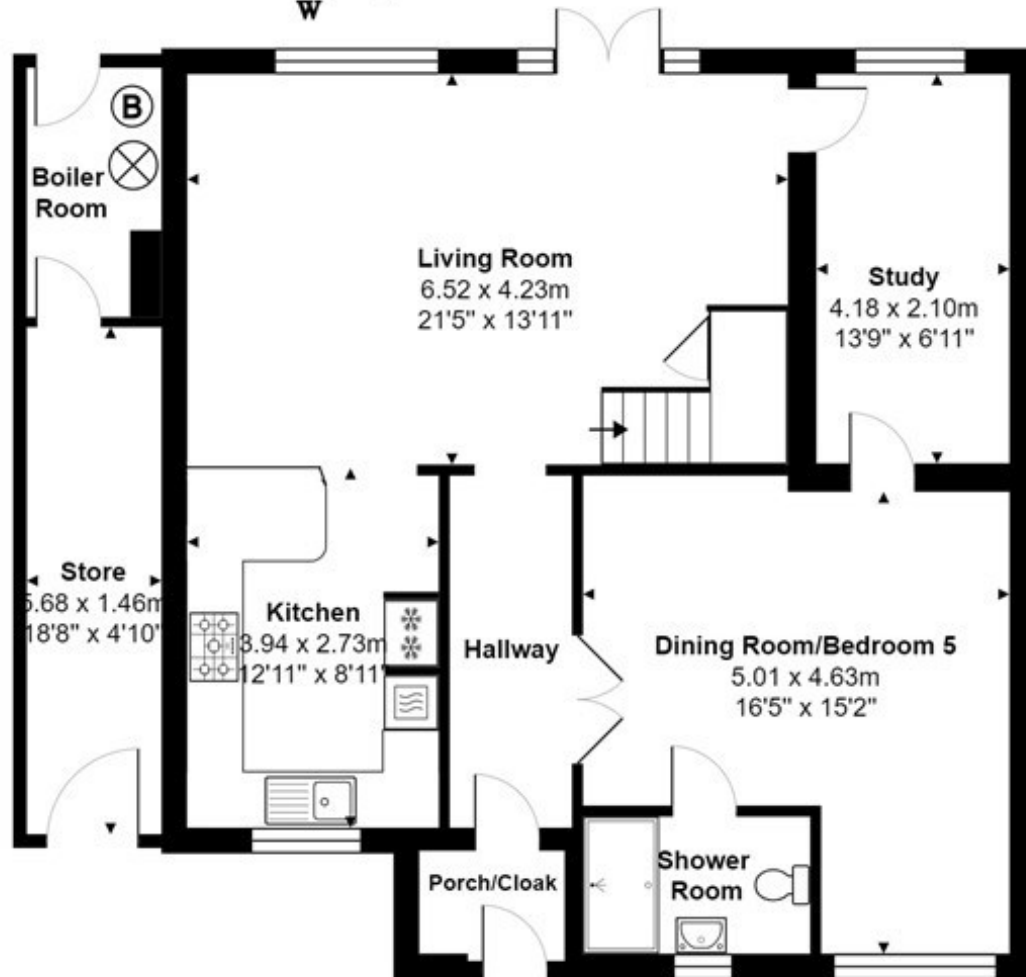
- ENCLOSED GARDEN-
- DRIVEWAY PARKING-





Chestnut Close, Maidenhead, SL6 8SY

Approx. Total Area: 135.1 m² ... 1454 ft² (excluding boiler room, store)



Whilst every attempt has been made to ensure the accuracy of the floorplans contained here, measurements of doors, windows and rooms are approximate and no responsibility is taken for any error, omission or mis-statement. These plans are for representation purposes only.







Directions: From Maidenhead town centre take the A4 towards Maidenhead Bridge turning left before the garage into Ray Park Avenue. Take the fifth turning on the left into Ray Mill Road East and first right into Chestnut Close.

